



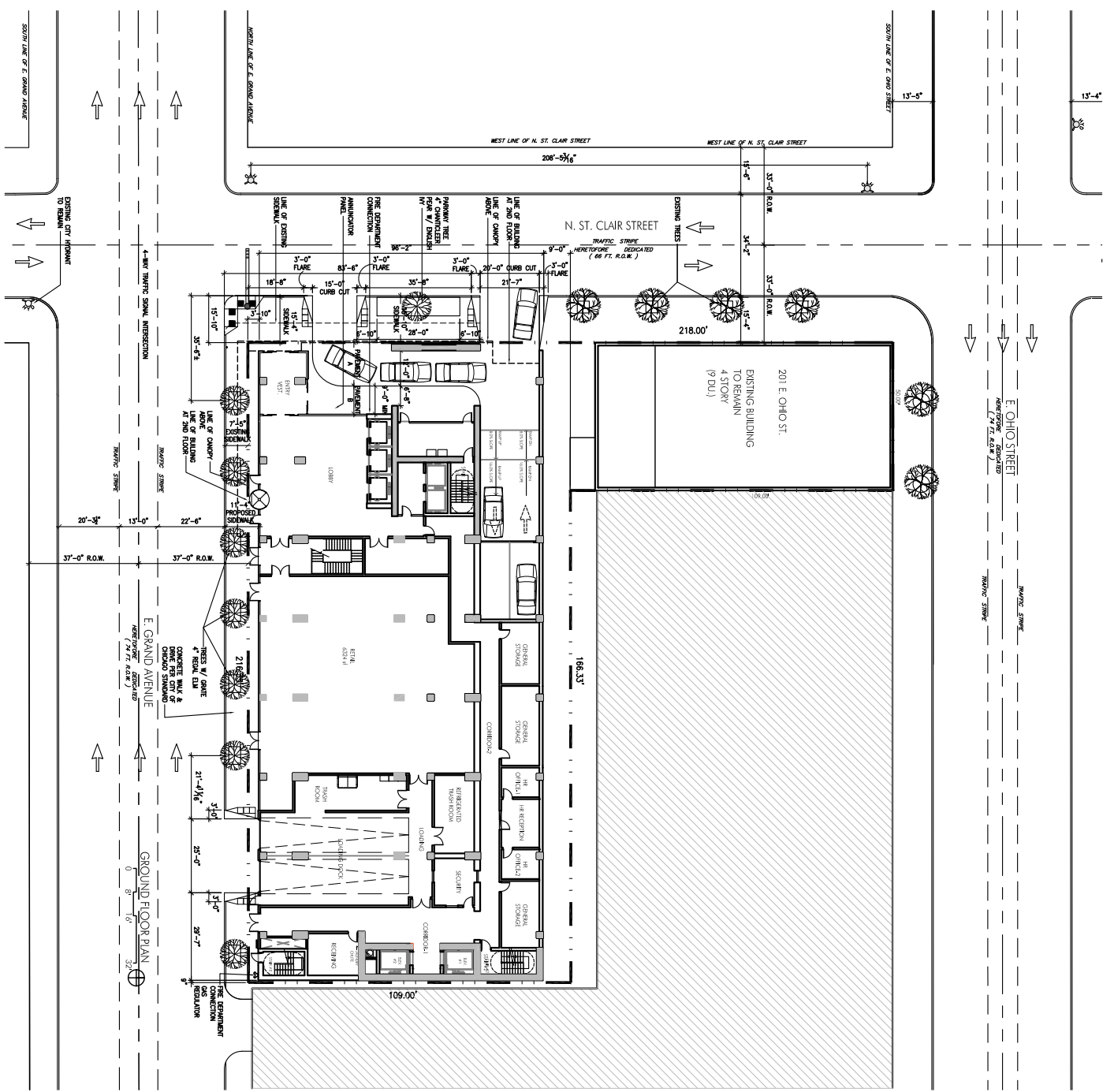


SUTHERLAND PEARSAILL DEVELOPMENT

533 N. ST. CLAIR

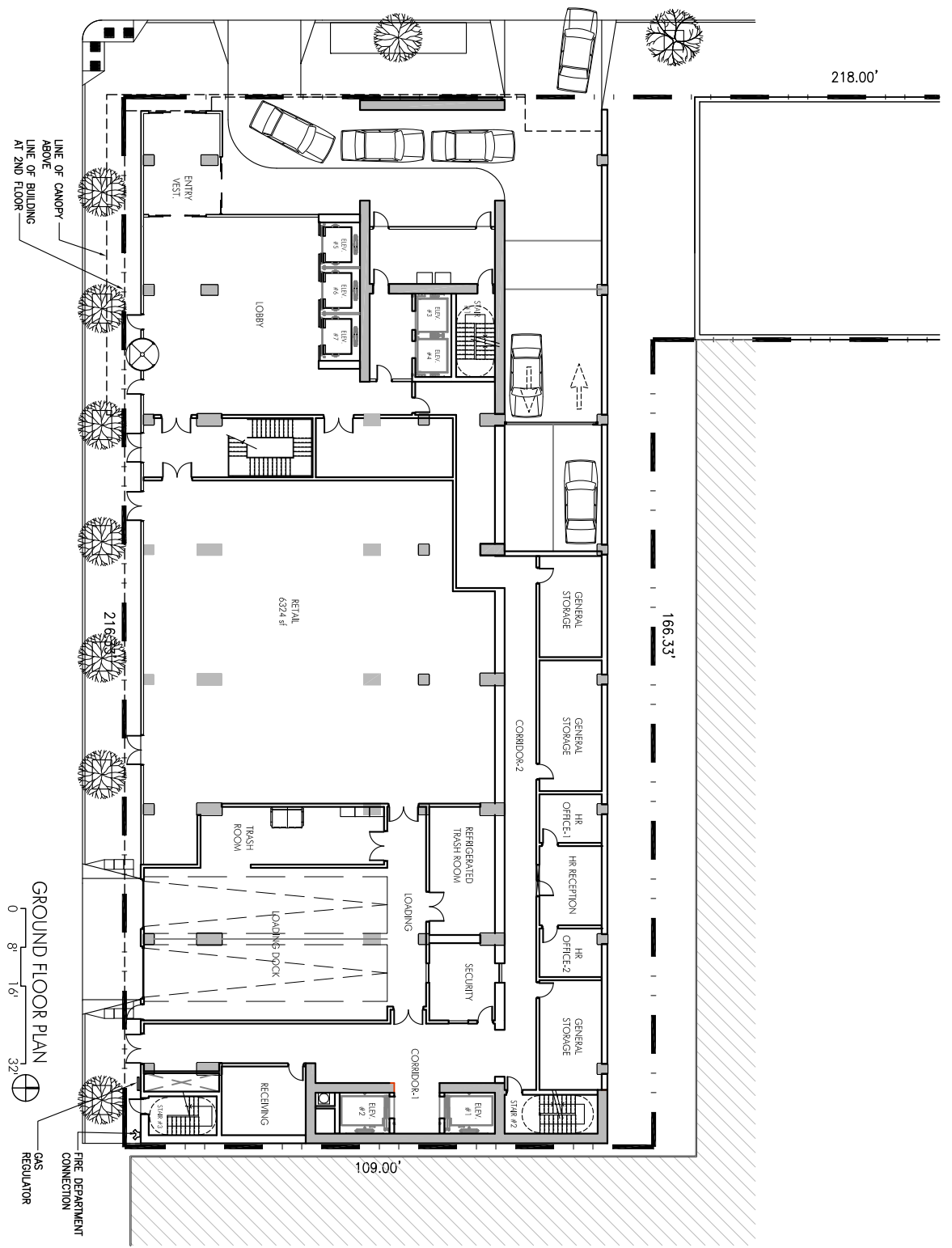
BRINNSTOOL + LYNCH, LTD.

ARCHITECTS



**45 STORY HOTEL**  
**500 FT TALL**  
**APPROX. 690,000 SF**  
**FULLY SPRINKLERED BUILDING**  
**CONSTRUCTION TYPE 1A**

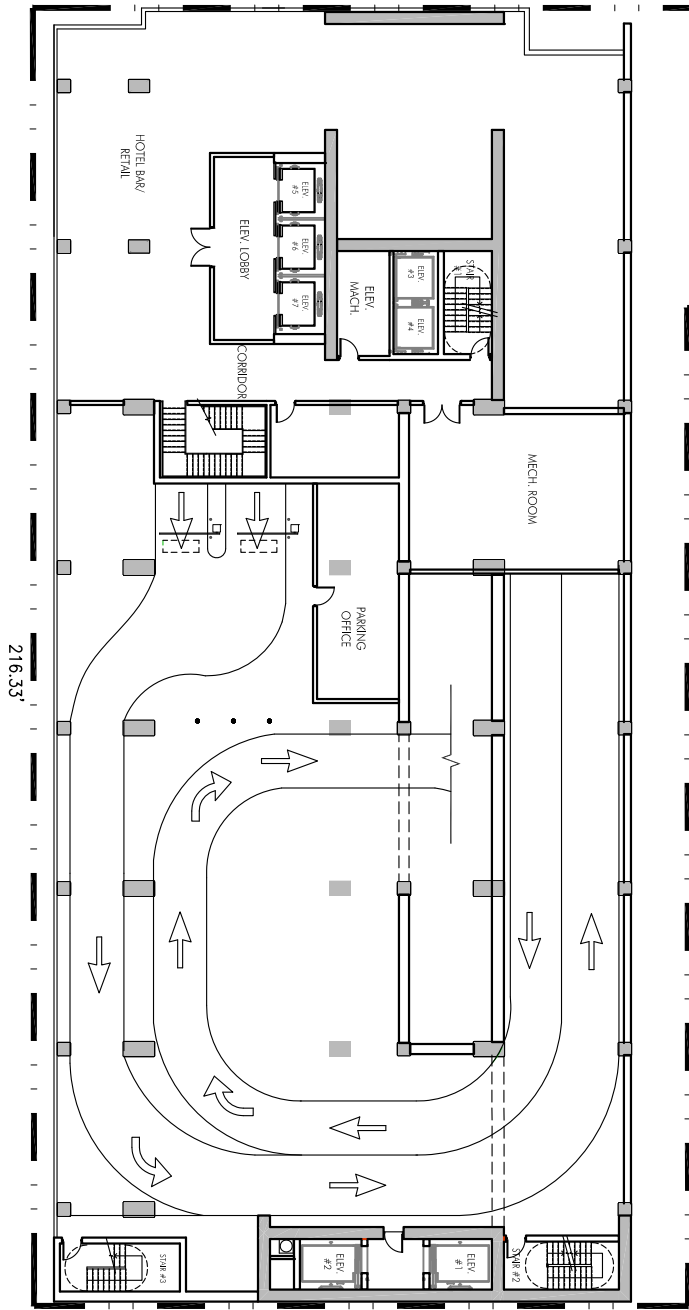
- 25 LEVEL FLOOR
- 9 RESIDENTIAL FLOOR
- 4 PARKING FLOOR
- 4 GROUND FLOOR



218.00'

166.33'

109.00'



SECOND FLOOR PLAN  
 0 8' 16' 32' 

SUTHERLAND PEARSALL DEVELOPMENT

533 N. ST. CLAIR

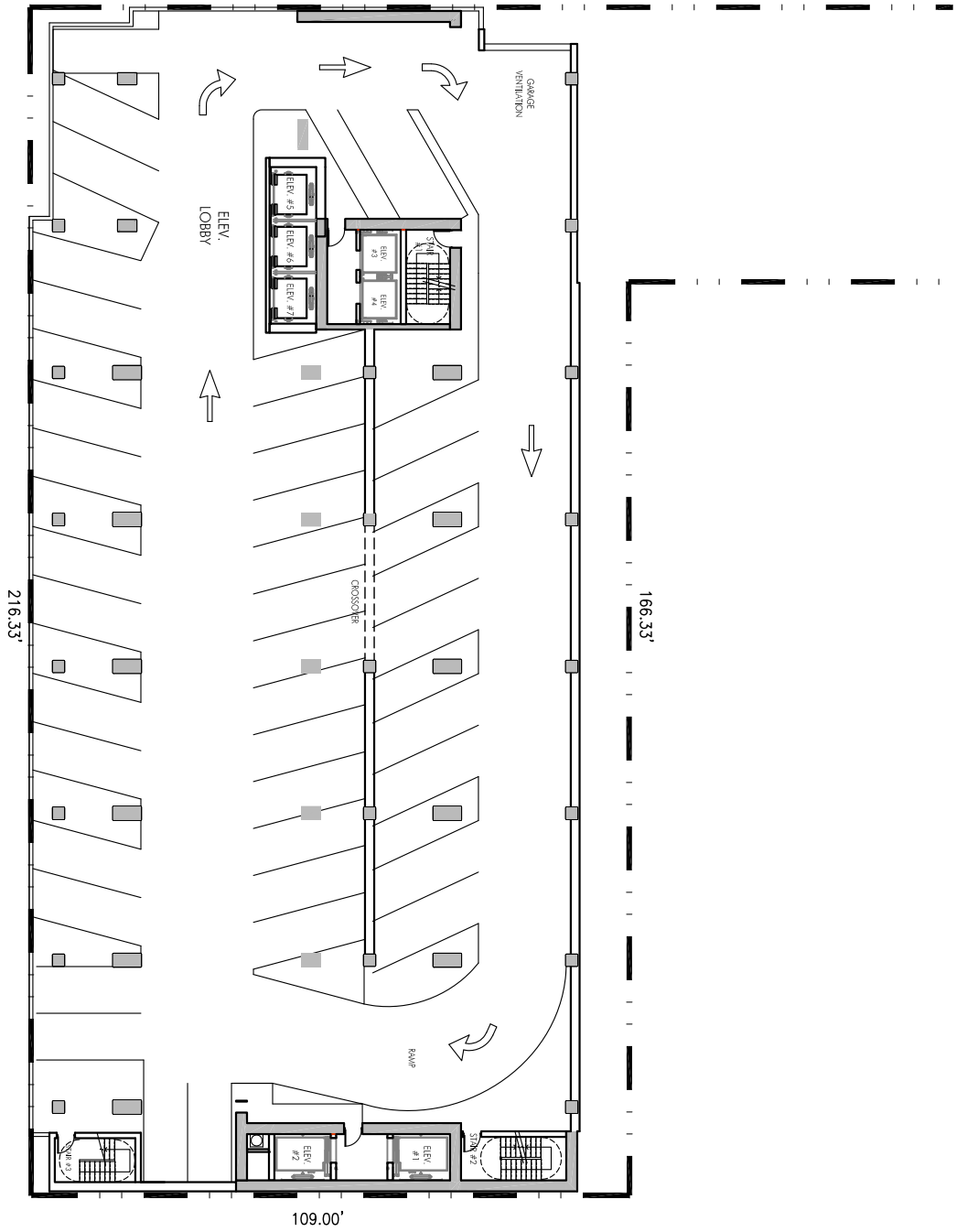
BRININSTOOL + LYNCH, LTD.

ARCHITECTS

DATE OF PLAN COMMISSION: 09/18/2008

© 2008 BRININSTOOL + LYNCH, LTD.

218.00'



THIRD FLOOR - TENTH FLOOR (TYPICAL) PLAN

0 8' 16' 32'

SUTHERLAND PEARSALL DEVELOPMENT

533 N. ST. CLAIR

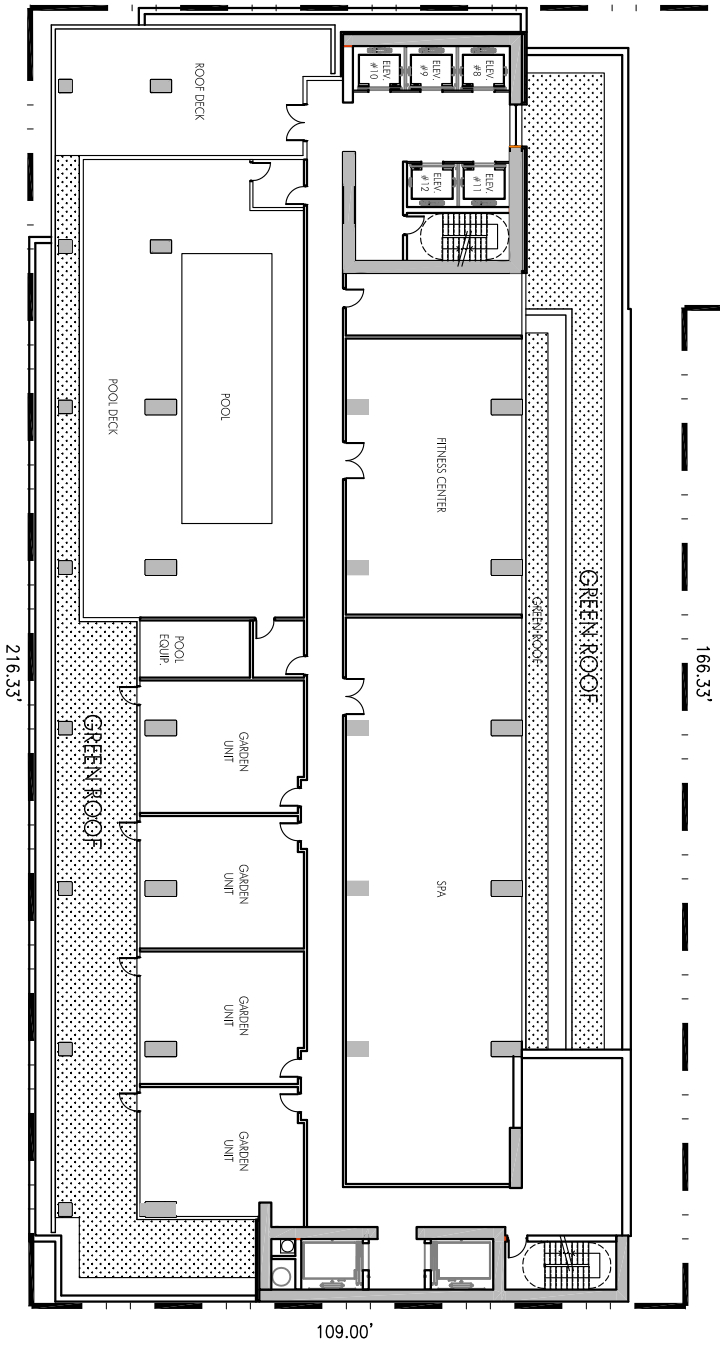
BRININSTOOL + LYNCH, LTD.

ARCHITECTS

DATE OF PLAN COMMISSION: 09/18/2008

© 2008 BRININSTOOL + LYNCH, LTD.

218.00'



FOURTEENTH (POOL/SPA) FLOOR PLAN

0 8' 16' 32'

SUTHERLAND PEARSALL DEVELOPMENT

533 N. ST. CLAIR

BRINNSTOOL + LYNCH, LTD.

DATE OF PLAN COMMISSION: 09/18/2008

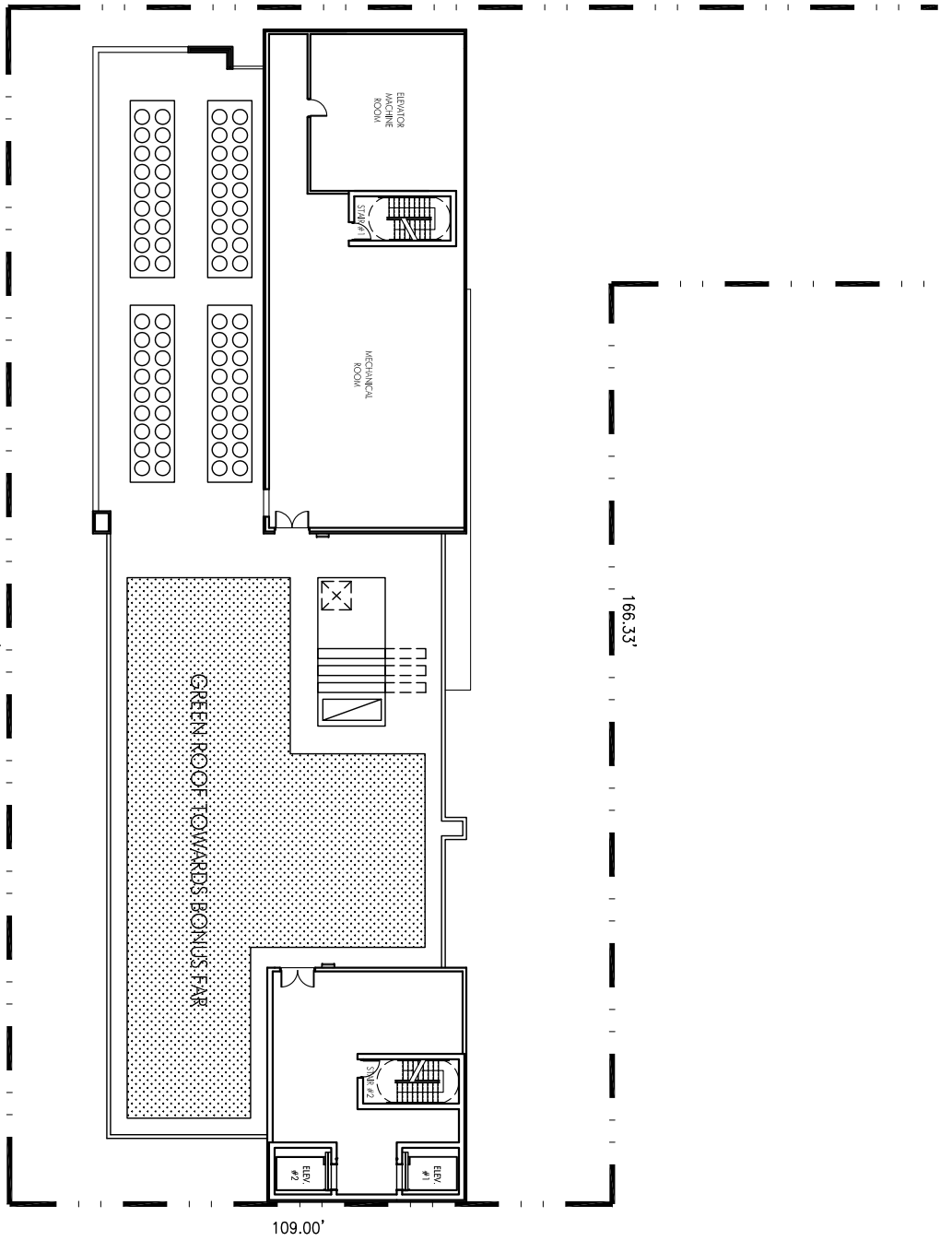
ARCHITECTS  
© 2008 BRINNSTOOL + LYNCH, LTD.

218.00'

166.33'

109.00'

216.33'



SUTHERLAND PEARSALL DEVELOPMENT

533 N. ST. CLAIR

DATE OF PLAN COMMISSION: 09/18/2008

BRININSTOOL + LYNCH, LTD.

ARCHITECTS

© 2008 BRININSTOOL + LYNCH, LTD.

218.00'

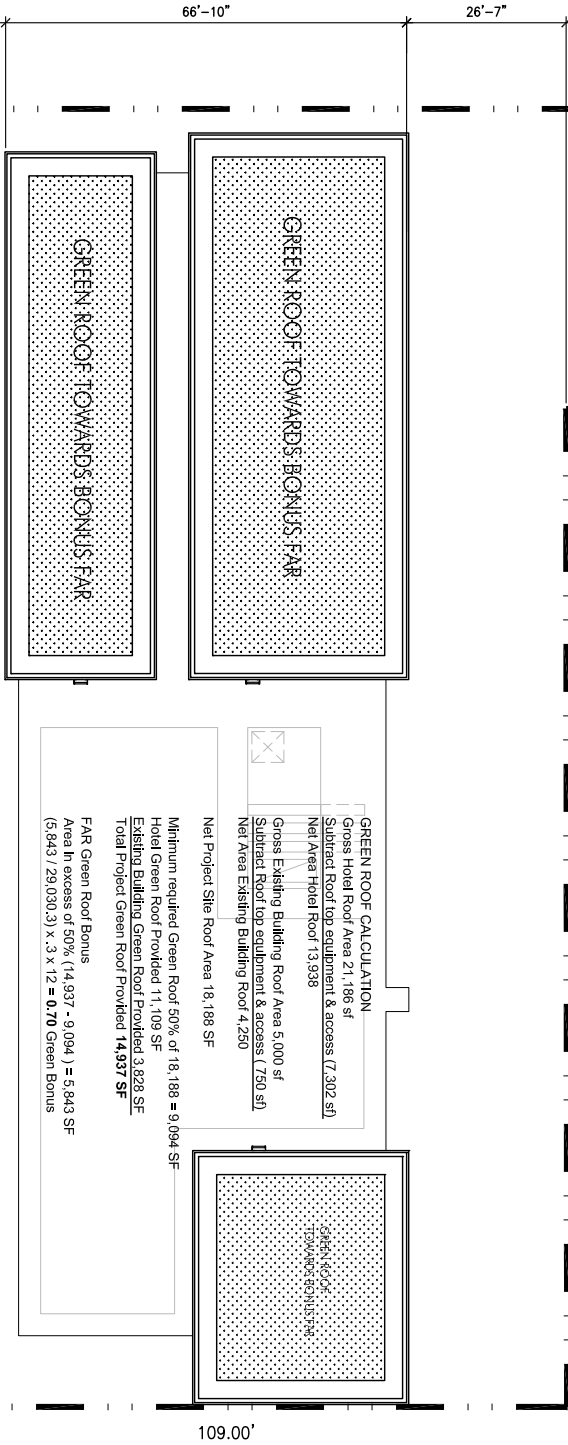
166.33'

66'-10"

26'-7"

109.00'

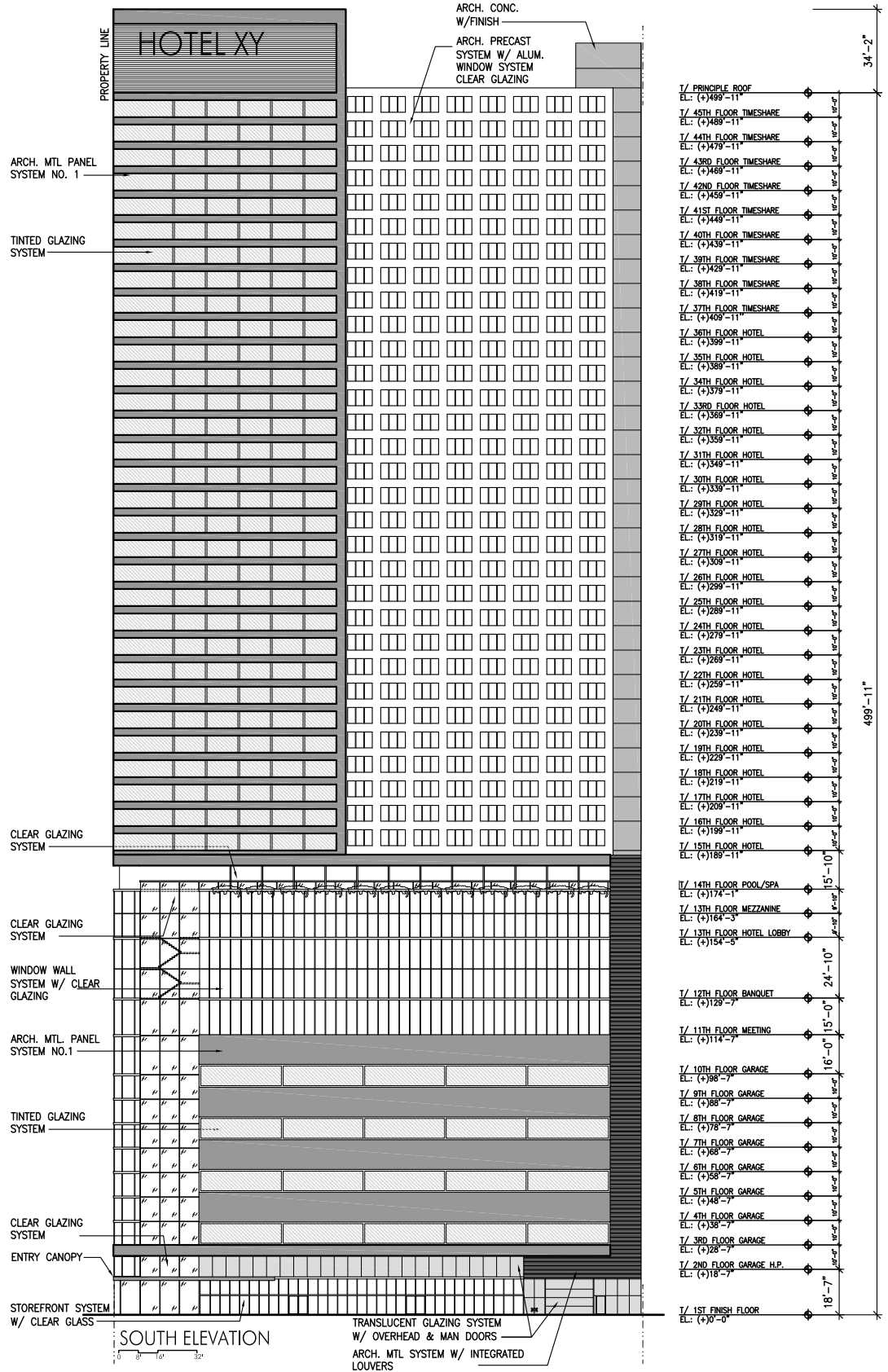
216.33'

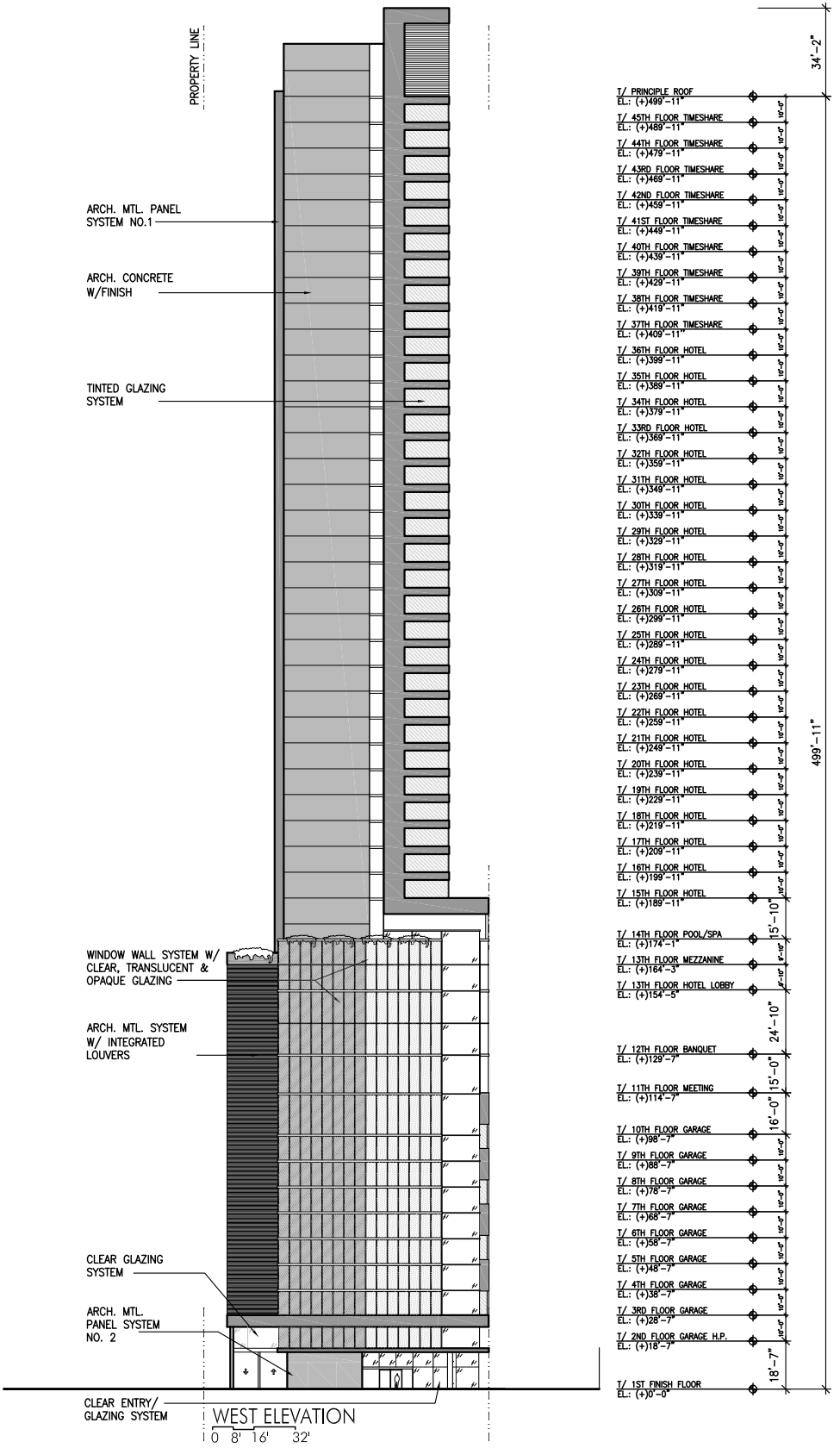


SUTHERLAND PEARSAI DEVELOPMENT

533 N. ST. CLAIR

BRINNSTOOL + LYNCH, LTD.  
ARCHITECTS





- 1/ PRINCIPLE ROOF  
EL: (+)489-11"
- 1/ 45TH FLOOR TIMESHARE  
EL: (+)489-11"
- 1/ 44TH FLOOR TIMESHARE  
EL: (+)449-11"
- 1/ 43RD FLOOR TIMESHARE  
EL: (+)469-11"
- 1/ 42ND FLOOR TIMESHARE  
EL: (+)459-11"
- 1/ 41ST FLOOR TIMESHARE  
EL: (+)449-11"
- 1/ 40TH FLOOR TIMESHARE  
EL: (+)439-11"
- 1/ 39TH FLOOR TIMESHARE  
EL: (+)429-11"
- 1/ 38TH FLOOR TIMESHARE  
EL: (+)419-11"
- 1/ 37TH FLOOR TIMESHARE  
EL: (+)409-11"
- 1/ 36TH FLOOR HOTEL  
EL: (+)399-11"
- 1/ 35TH FLOOR HOTEL  
EL: (+)389-11"
- 1/ 34TH FLOOR HOTEL  
EL: (+)379-11"
- 1/ 33RD FLOOR HOTEL  
EL: (+)369-11"
- 1/ 32TH FLOOR HOTEL  
EL: (+)359-11"
- 1/ 31TH FLOOR HOTEL  
EL: (+)349-11"
- 1/ 30TH FLOOR HOTEL  
EL: (+)339-11"
- 1/ 29TH FLOOR HOTEL  
EL: (+)329-11"
- 1/ 28TH FLOOR HOTEL  
EL: (+)319-11"
- 1/ 27TH FLOOR HOTEL  
EL: (+)309-11"
- 1/ 26TH FLOOR HOTEL  
EL: (+)299-11"
- 1/ 25TH FLOOR HOTEL  
EL: (+)289-11"
- 1/ 24TH FLOOR HOTEL  
EL: (+)279-11"
- 1/ 23TH FLOOR HOTEL  
EL: (+)269-11"
- 1/ 22TH FLOOR HOTEL  
EL: (+)259-11"
- 1/ 21TH FLOOR HOTEL  
EL: (+)249-11"
- 1/ 20TH FLOOR HOTEL  
EL: (+)239-11"
- 1/ 19TH FLOOR HOTEL  
EL: (+)229-11"
- 1/ 18TH FLOOR HOTEL  
EL: (+)219-11"
- 1/ 17TH FLOOR HOTEL  
EL: (+)209-11"
- 1/ 16TH FLOOR HOTEL  
EL: (+)199-11"
- 1/ 15TH FLOOR HOTEL  
EL: (+)189-11"
- 1/ 14TH FLOOR POOL/SPA  
EL: (+)174-1"
- 1/ 13TH FLOOR MEZZANINE  
EL: (+)164-3"
- 1/ 13TH FLOOR HOTEL LOBBY  
EL: (+)154-3"
- 1/ 12TH FLOOR BANQUET  
EL: (+)129-7"
- 1/ 11TH FLOOR MEETING  
EL: (+)114-7"
- 1/ 10TH FLOOR GARAGE  
EL: (+)98-7"
- 1/ 9TH FLOOR GARAGE  
EL: (+)88-7"
- 1/ 8TH FLOOR GARAGE  
EL: (+)78-7"
- 1/ 7TH FLOOR GARAGE  
EL: (+)68-7"
- 1/ 6TH FLOOR GARAGE  
EL: (+)58-7"
- 1/ 5TH FLOOR GARAGE  
EL: (+)48-7"
- 1/ 4TH FLOOR GARAGE  
EL: (+)38-7"
- 1/ 3RD FLOOR GARAGE  
EL: (+)28-7"
- 1/ 2ND FLOOR GARAGE H.P.  
EL: (+)18-7"
- 1/ 1ST FINISH FLOOR  
EL: (+)0-0"

ARCH. MTL. PANEL SYSTEM NO.1

ARCH. CONCRETE W/FINISH

TINTED GLAZING SYSTEM

WINDOW WALL SYSTEM W/ CLEAR, TRANSLUCENT & OPAQUE GLAZING

ARCH. MTL. SYSTEM W/ INTEGRATED LOUVERS

CLEAR GLAZING SYSTEM

ARCH. MTL. PANEL SYSTEM NO. 2

CLEAR ENTRY/GLAZING SYSTEM

WEST ELEVATION  
0 8' 16' 32'

SUTHERLAND PEARSAI DEVELOPMENT

533 N. ST. CLAIR

BRINNSTOOL + LYNCH, LTD.  
ARCHITECTS

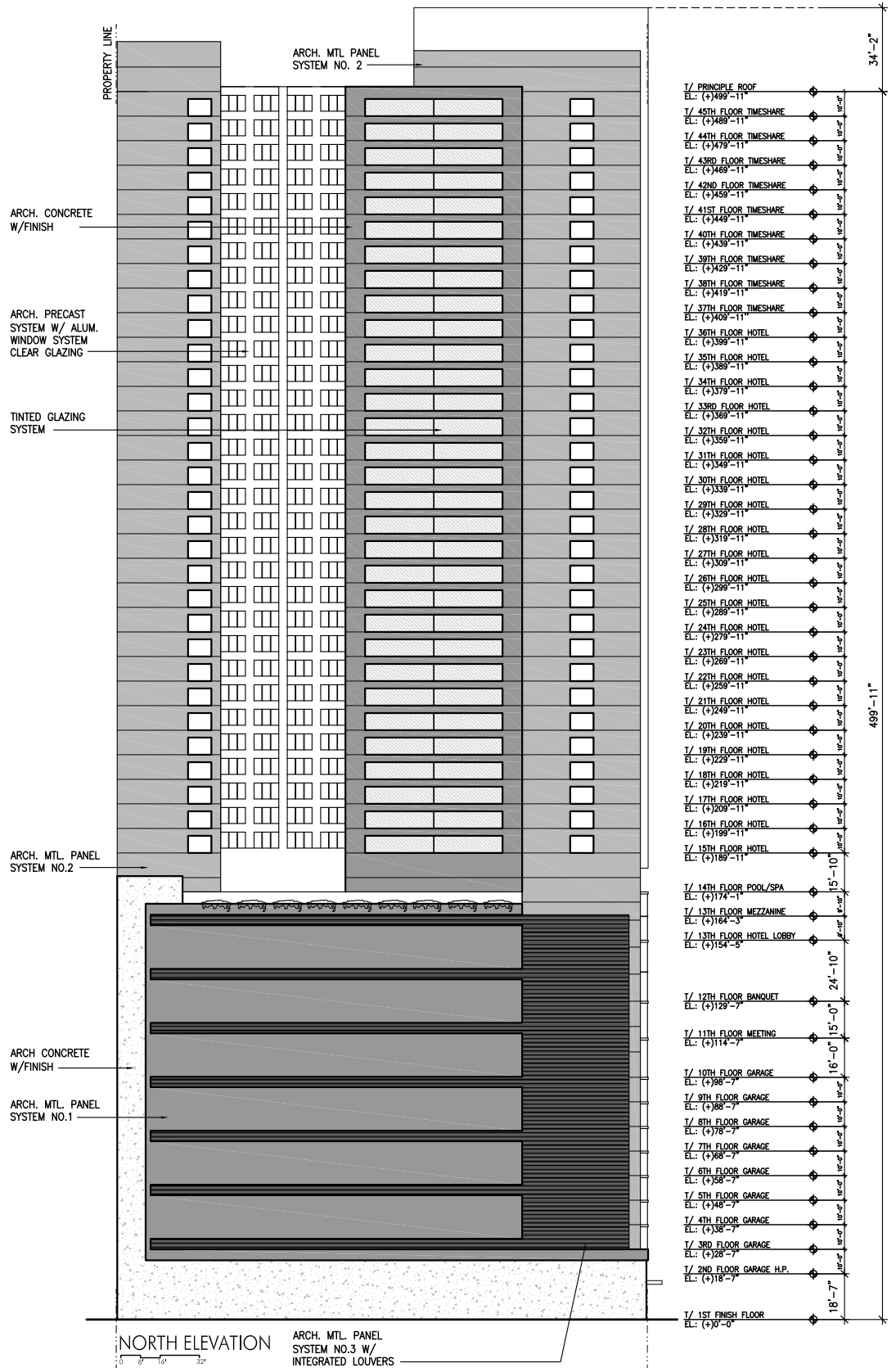
DATE OF PLAN COMMISSION: 09/18/2008

© 2008 BRINNSTOOL + LYNCH, LTD.

SUTHERLAND PEARSCALL DEVELOPMENT

533 N. ST. CLAIR

BRININSTOOL + LYNCH, LTD.  
ARCHITECTS



SUTHERLAND PEARSCALL DEVELOPMENT

533 N. ST. CLAIR

BRINNSTOOL + LYNCH, LTD.  
ARCHITECTS

